

# SPECjbb2015 coming soon !

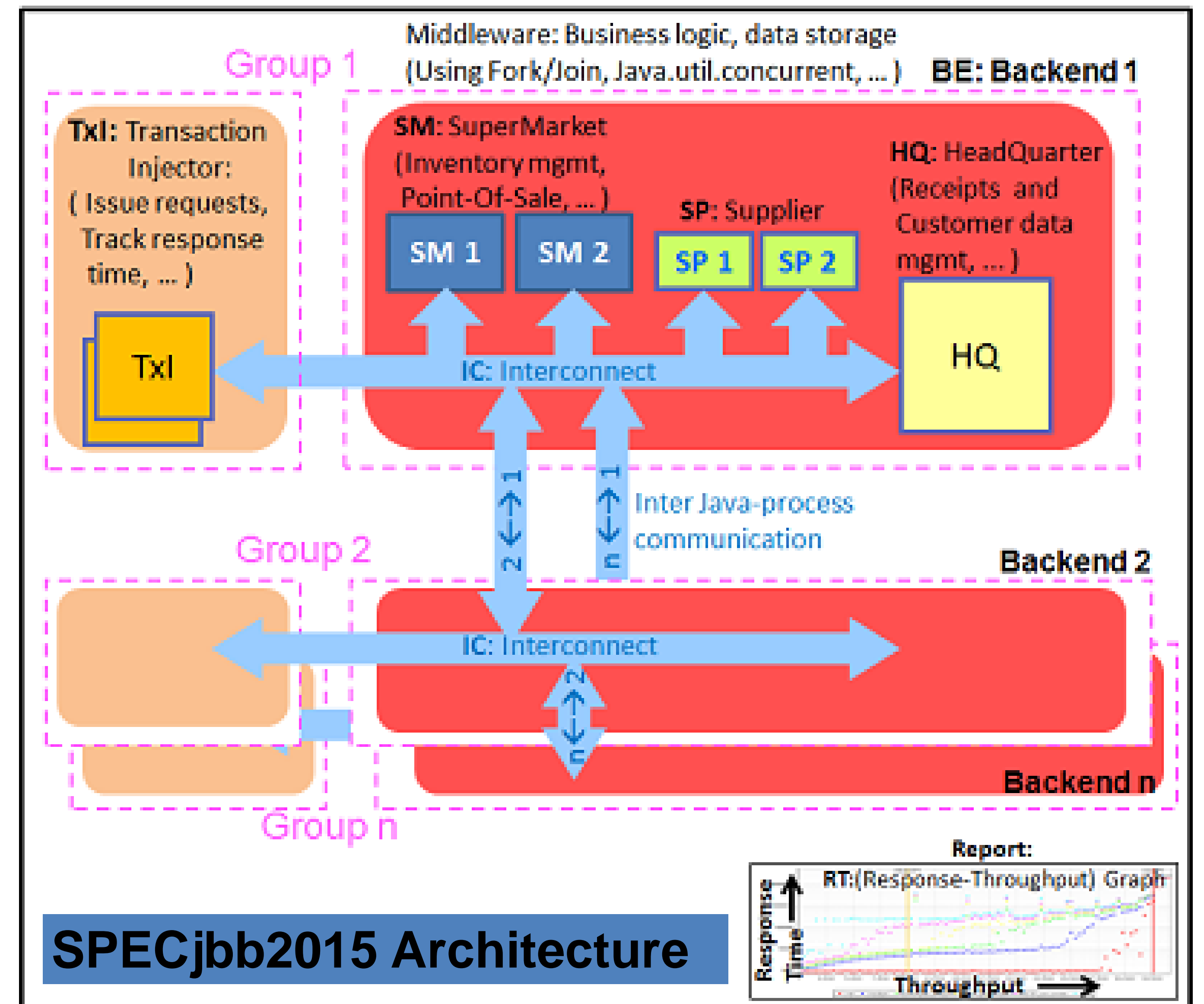
## SPECjbb2015

SPECjbb2015 is based on SPECjbb2013 with a defect fixed and robust checks added.

In SPECjbb2013 ... a defect recently uncovered impacts the comparability of results. This flaw can significantly reduce the amount of work done during the measurement period, resulting in an inflated SPECjbb<sup>®</sup>2013 metric.

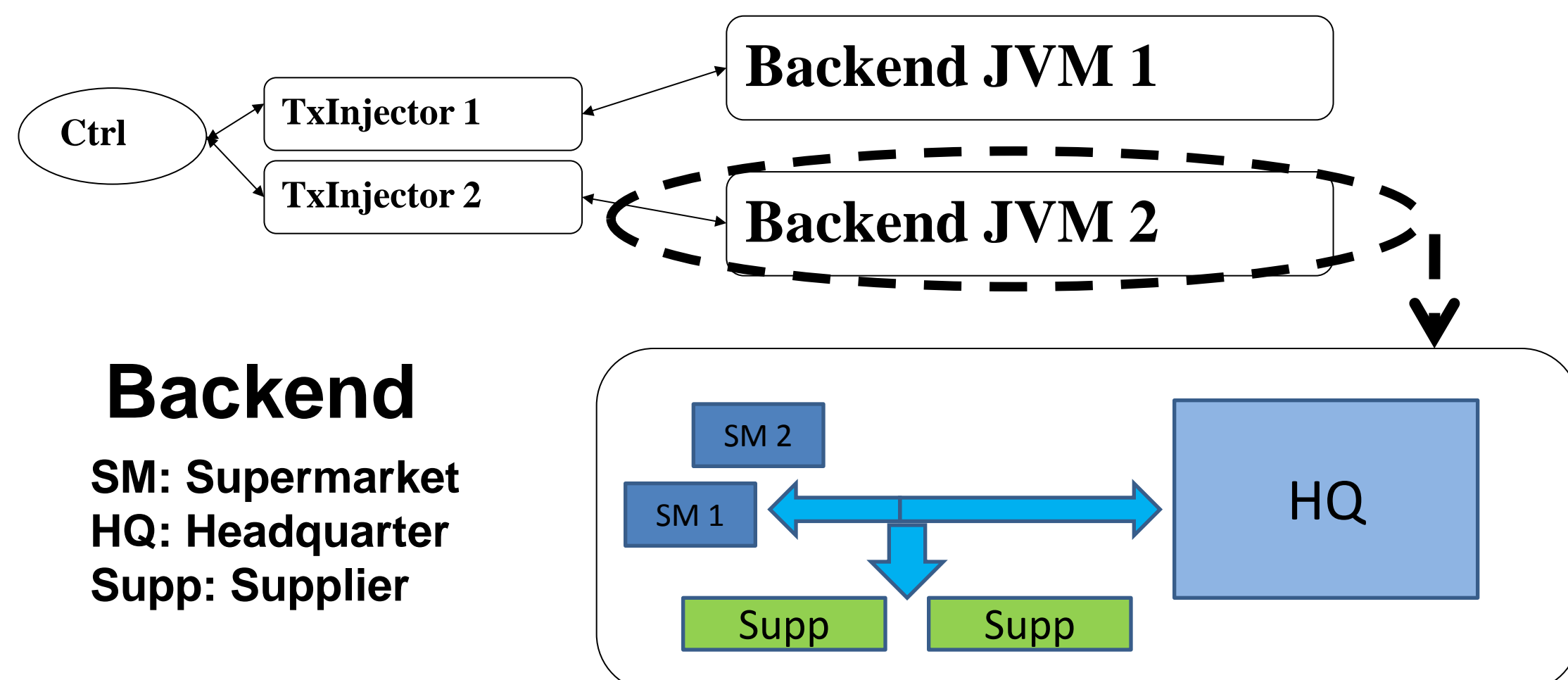
SPECjbb2015 addresses this defect as well as implements monitoring and validation throughout the run.

SPECjbb2015 also planning to add timing accuracy checks so that SPECjbb2015-MultiJVM publications could be submitted for Virtualized systems also.

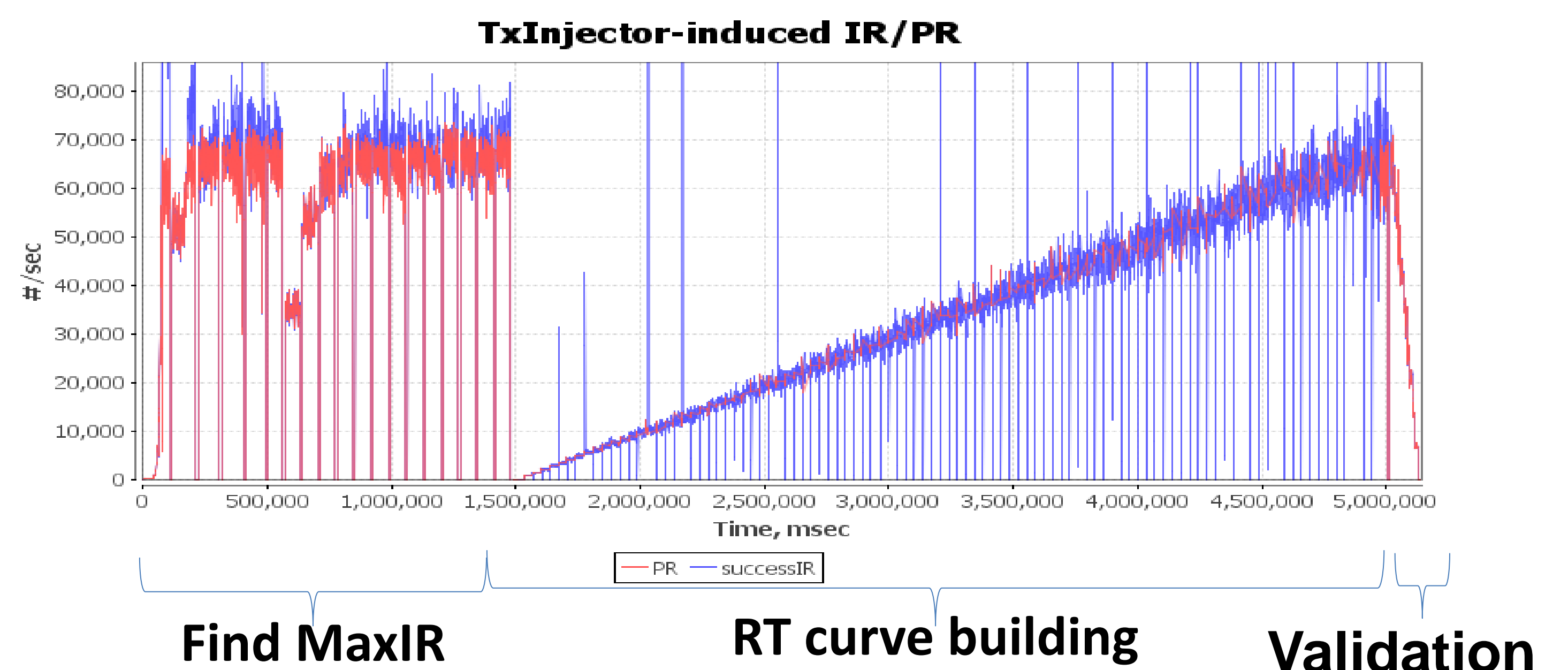


### Model :

- Emulates the stressing of the h/w infrastructure of a super mega store
- Models the POS (Point of Sale) + company headquarter running on shared h/w
- Can mimic a deployment in the virtualized and cloud environment

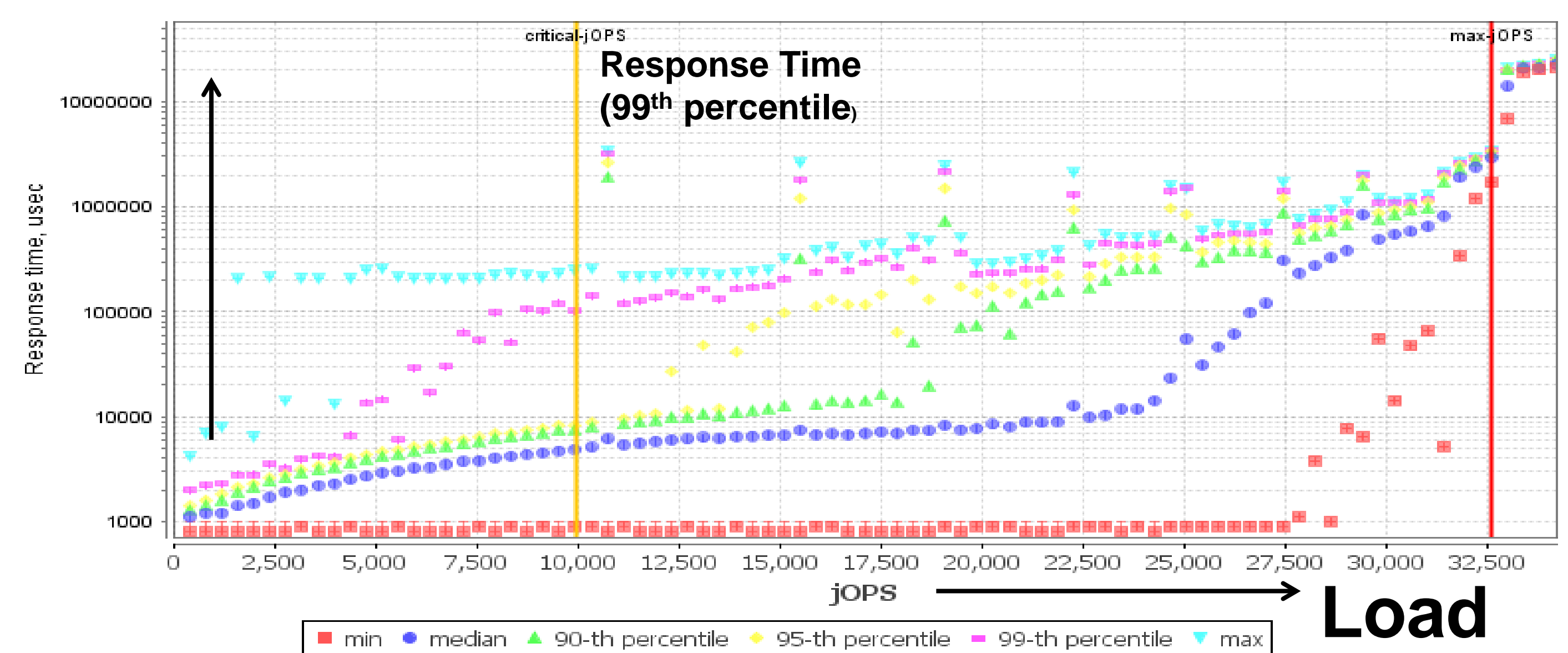


### Different stages :



### SPECjbb2015:

- Response time at various graduated load levels
  - Sensitive to power mgmt and other latencies
- Data sharing among multiple JVM instances
  - Exposes latencies among blades modules
- Complexity while maintaining simplicity



Injection Rate (IR) increases by 1% at each step till max. capacity

### Hundreds of research options

- Number of SM (impact of multiple concurrent HashMaps )
- Inventory in a SM (size of concurrent HashMaps)
- Receipts in HQ (long term objects as well as storage size in HQ)
- Remote traffic among Backends (stresses inter-Java process communication)
- Injection mechanism of requests (arrival patterns of requests)
- Thread pool size (tuning of Fork/Join Framework)
- Request mix ratios (changes execution patterns)
- Data Transports (impact of encryption, compression, serialization etc.)
- Networking (Inter and Intra communication protocols)
- ...

### Active members

- IBM
- Intel
- HP
- Lenovo
- Oracle
- RedHat